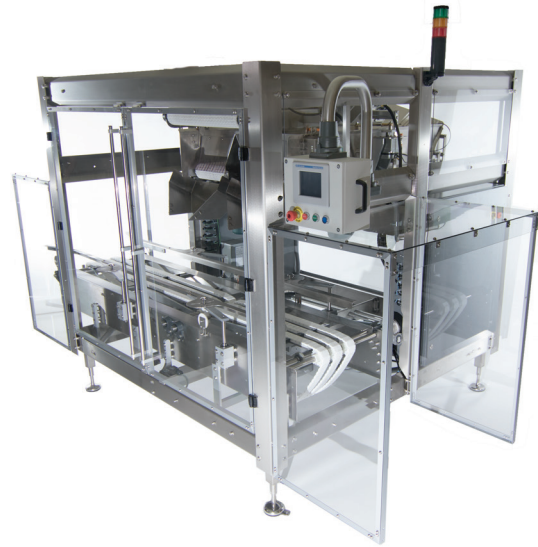


DPS Dual Scale Bulk Fill

*Your solution for fast, accurate
filling of loose items*



Key Benefits:

- Reduction in labor and repetitive stress injuries
- More accurate fill weights vs. manual operation
- Higher production rates vs. manual or single scale operation

Key Features:

- Industrial Design – Design and built with three shift operations and 304 stainless steel framing
- Industry Standard Control – Controlled by industry standard PLC controls as opposed to proprietary weighing boards
- Space Saver Footprint – Product is fed at a 6' elevation eliminating the need for vertical lift or long incline conveyors.

About The DPS Dual Scale Bulk Fill Case Packer

The DPS Dual Scale Bulk Fill Case Packers is perfect for applications requiring fast, accurate filling of loose items such as cookies, candy bars, chicken nuggets, IQF vegetables, cheese, flavor packets, condiments, etc. The machine “bulk” fills at the first loading station for speed and the “trickle” fills at the second loading station for accuracy. The DPS bulk filler uses the industry proven CSW series weighing platform and the industry standard PLC control.

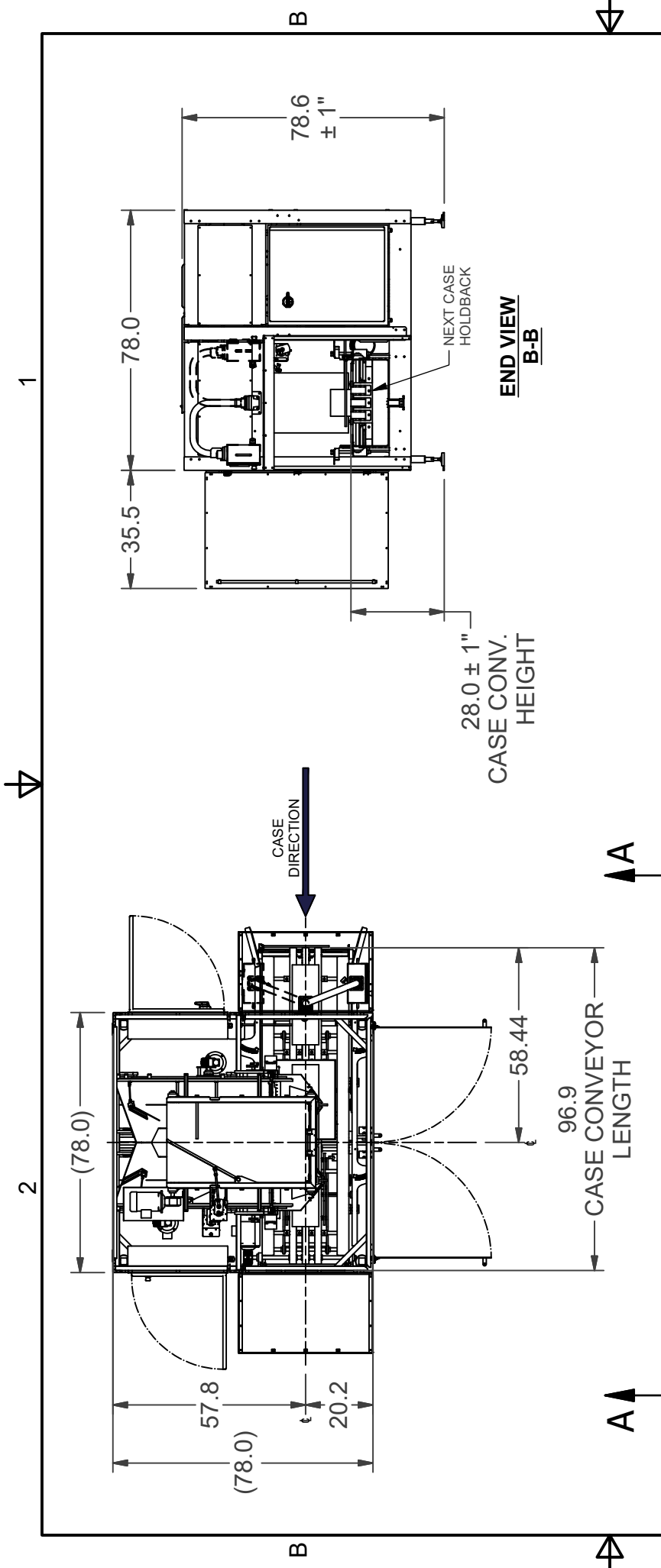
Packaging Distributors, Inc.

www.pdimachinery.com

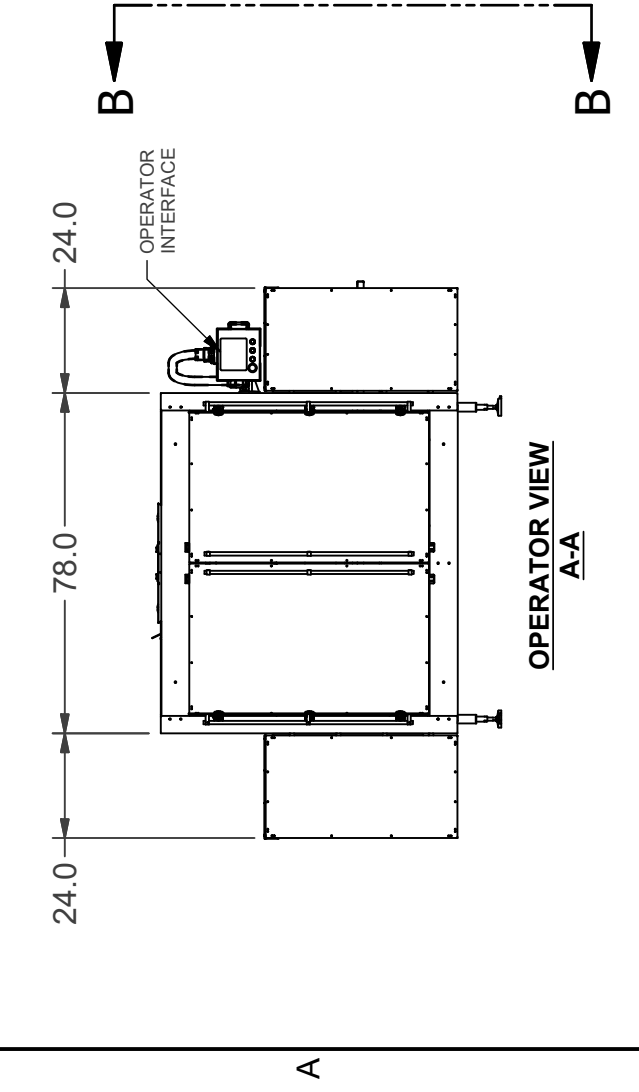
P (254) 848-8123

E rjf@pdimachinery.com





NOTE:
 RIGHT HAND MODEL SHOWN
 LEFT HAND MODEL AVAILABLE
 ELECTRICAL REQUIREMENTS: 480 VAC 3-PHASE FUSED AT 10 AMPS
 AIR REQUIREMENTS: 80 PSI, < 3 SCFM
 MAXIMUM CASE DIMENSION (INCHES) 24"L x 16"W x 14"T
 MINIMUM CASE DIMENSION (INCHES) 12"L x 8"W x 6"T
 (Case height + top flaps not to exceed 20"T max)



TOLERANCE UNLESS NOTED		PROJECT		SCALE		DRAWN BY: S. FIRMIN	
DECIMAL X.XX = ±0.010 X.XXX = ±0.003		HIGH SPEED FILL BY WEIGHT CASE PACKER (RIGHT HAND)		TITLE		DESIGNER: R.FALLAS	
FRACTIONAL $\frac{X}{X} = \pm \frac{1}{32}$		DATE		DRAWING NUMBER		SHEET NO.	
ANGULAR ±0.5°		9/21/2017		DPS1008RH		1 of 1	
REV	REV DESCRIPTION			REV BY		ECN	

PACKAGING DISTRIBUTORS, INC.