

# CSW End-of-Line Check Weigher

*You solution for efficient,  
accurate end-of-line weighing*



## About the CSW

The CSW “End-of-Line” Check Weigher accurately weighs cases, trays, cartons, and other containers to ensure correct product weight before shipping. If the measured weight is not within tolerance, it is automatically rejected off the line (left hand and right-hand reject arms available). The CSW Check Weigher weighs just the product not the conveyor.

## 3 Key Benefits

- **Industrial Design** - The unique “Lifting Weigh Platform” allows the product to be weighed without having to weigh the entire conveyor. This protects the load cells from possible damage caused by excessive weight or force being applied to the conveyor and produces highly accurate results. Industrial conveyor components are used without regard to their weight.
- **Standard Controls** - the CSW Check Weigher is controlled by industry standard PLCs instead of proprietary digital control boards. Most plant maintenance technicians are familiar with PLCs, so minimum training is required. The CSW Weigher easily interfaces with external devices such as barcode scanners, printers, and SCADA systems via RS232, Ethernet, or PLC communication protocols.
- **Compact Footprint** - All functions of the CSW Weighing System – Next Case Holdback, Weighing, and Reject – occur in a length of just over 3 feet. With the CSW Weigher, there is no need for a separate sequencing or reject conveyor.

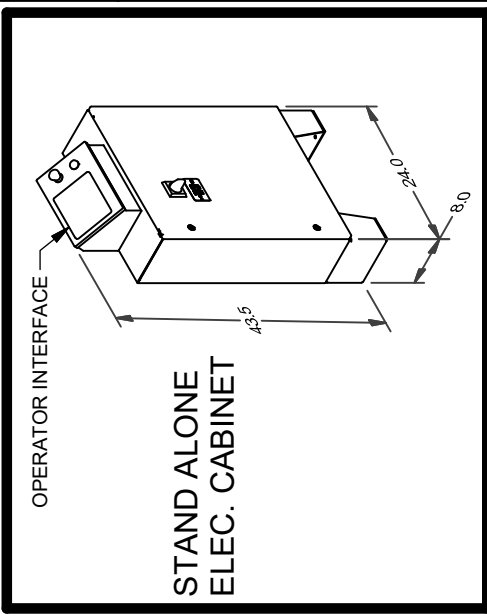
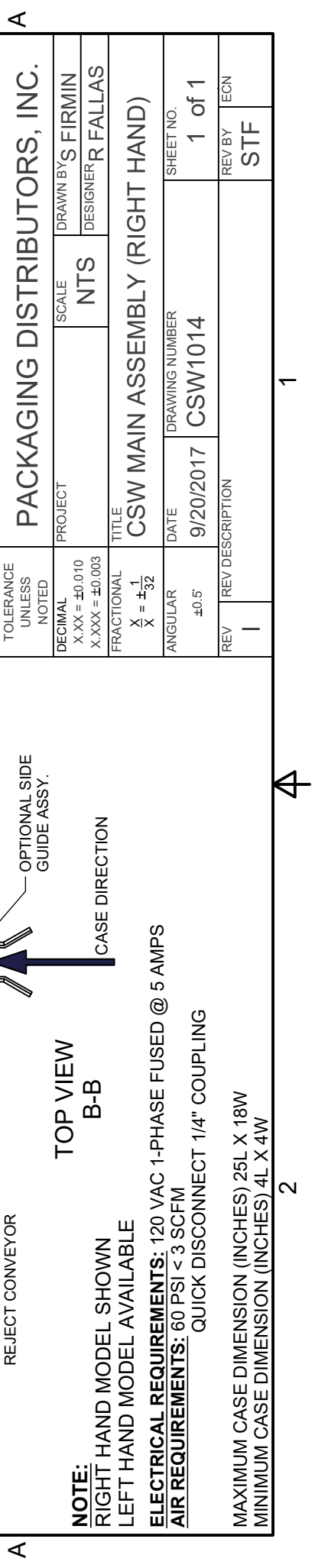
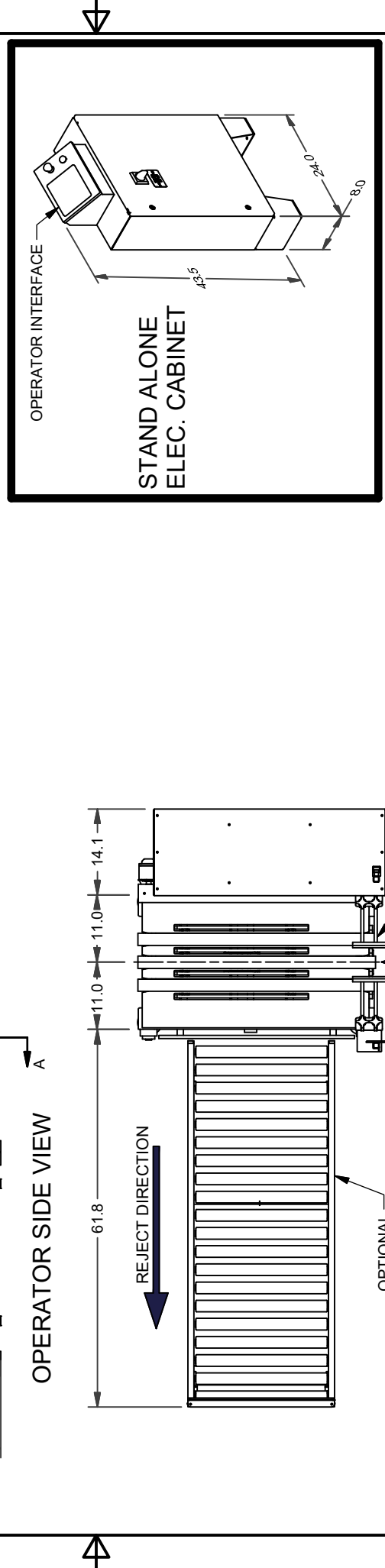
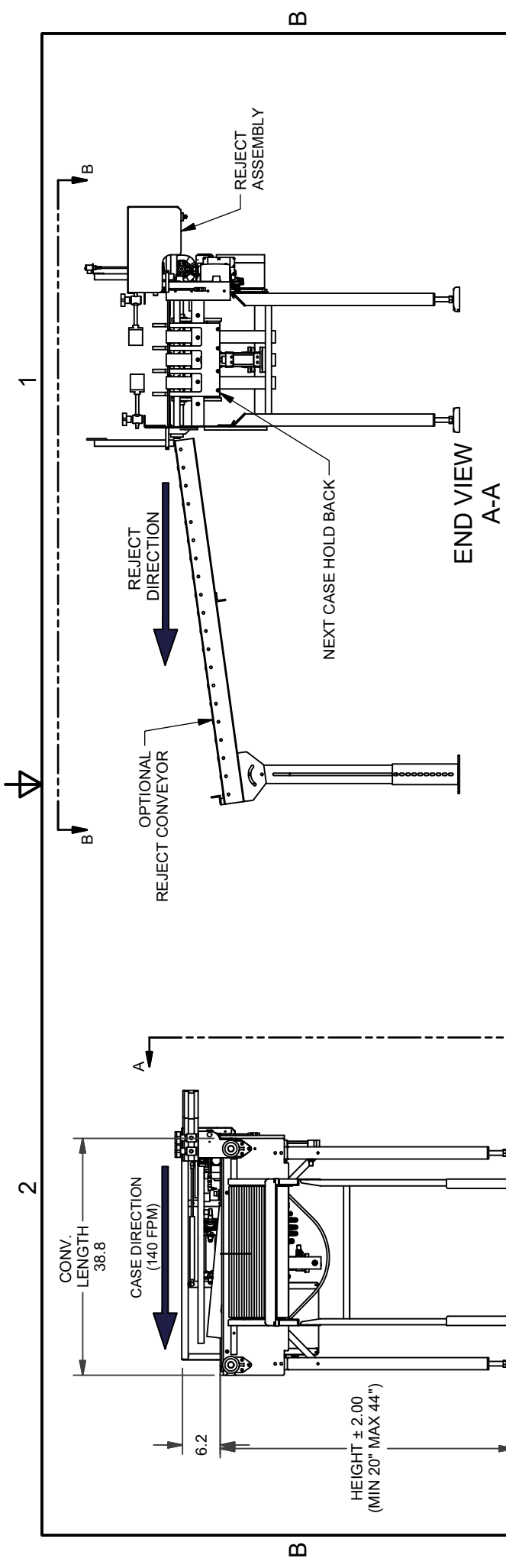
Packaging Distributors, Inc.

[www.pdimachinery.com](http://www.pdimachinery.com)

**P** (254) 848-8123

**E** [rjf@pdimachinery.com](mailto:rjf@pdimachinery.com)





TOLERANCE UNLESS NOTED		PROJECT		SCALE		DRAWN BY: S FIRMIN	
DECIMAL X.XX = ±0.010 X.XXX = ±0.003		CSW MAIN ASSEMBLY (RIGHT HAND)		NTS		DESIGNER: R FALLAS	
FRACTIONAL $\frac{X}{Y} = \pm \frac{1}{32}$		TITLE		DRAWING NUMBER		SHEET NO.	
ANGULAR ±0.5°		CSW MAIN ASSEMBLY (RIGHT HAND)		CSW1014		1 of 1	
REV		REV DESCRIPTION		REV BY		ECN	
1				STF		ECN	

**PACKAGING DISTRIBUTORS, INC.**

**NOTE:**  
 RIGHT HAND MODEL SHOWN  
 LEFT HAND MODEL AVAILABLE

**ELECTRICAL REQUIREMENTS:** 120 VAC 1-PHASE FUSED @ 5 AMPS  
**AIR REQUIREMENTS:** 60 PSI < 3 SCFM  
 QUICK DISCONNECT 1/4" COUPLING

MAXIMUM CASE DIMENSION (INCHES) 25L X 18W  
 MINIMUM CASE DIMENSION (INCHES) 4L X 4W