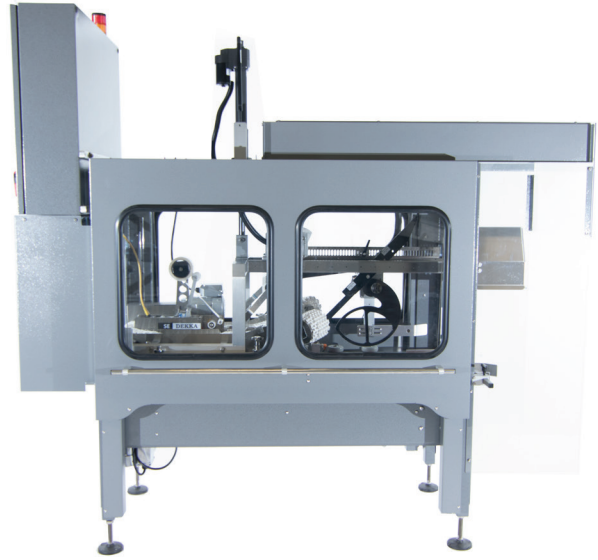


CTA Case Sealer

Your solution for flat, square boxes, every time.



Case Sealer Features:

- Change over to different size boxes in three easy, repeatable steps.
- Over-filled boxes can be sealed with the top assembly “breathing” if product is above the score line.
- Positive major flap folding – The major flap folding conveyor moves with the box and gently folds the major flaps as the box is moved forward.
- Positive minor flap folding – Both front and rear flaps are positively folded instead of relying on stationary plows.
- Safety – Electrically interlocked guard doors
- Space saver footprint – guard doors open vertically

Folding Major Flaps

The top belts capture the major flaps (after the minor flaps have been folded) and as the top belts are moving down and towards each other, they gently fold the major flaps. Since the top belt is travelling at the same speed as the case, there is no friction between the case and the folding mechanism. Using a folding conveyor instead of a stationary bar eliminates friction between the bar and the case. We are effectively eliminating box skewing.

Folding the Front and Rear Minor Flaps

The front and rear minor flaps are folded at the same time, just prior to the major flaps being folded. Once the major flaps are partially folded, the front and rear minor flap folders can retract as the major flaps will hold the minor flaps down. This eliminates the need for the center plate that is typically used to hold the two minor flaps in position until the major flaps can be folded.

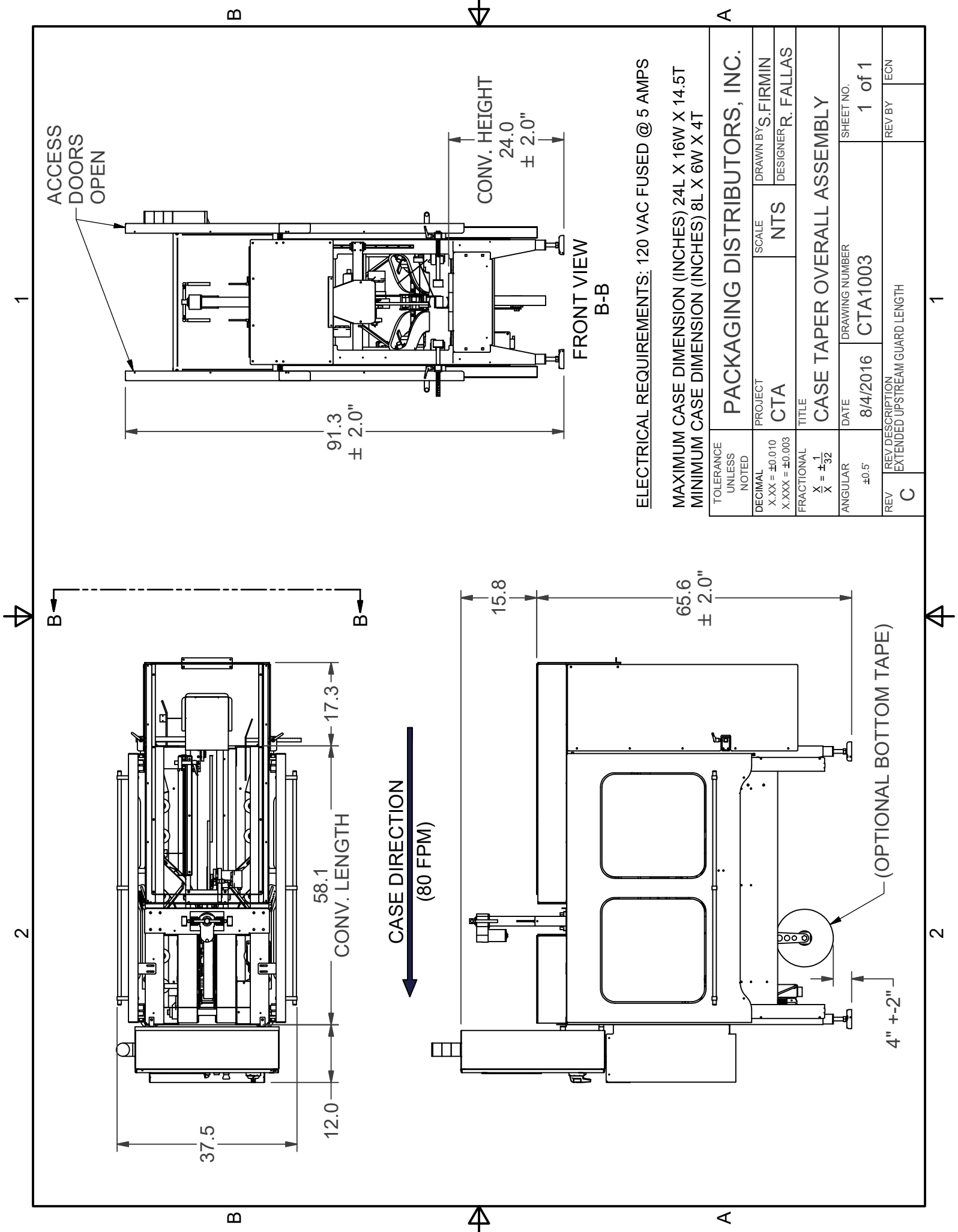
The CTA Case Sealer is Patented

Packaging Distributors, Inc.
www.pdimachinery.com

P (254) 848-8123

E rjf@pdimachinery.com





ACCESS DOORS OPEN

CONV. HEIGHT
24.0
± 2.0"

91.3
± 2.0"

FRONT VIEW
B-B

CASE DIRECTION
(80 FPM)

58.1
CONV. LENGTH

37.5

12.0

17.3

15.8

65.6
± 2.0"

(OPTIONAL BOTTOM TAPE)

4" ± 2"

ELECTRICAL REQUIREMENTS: 120 VAC FUSED @ 5 AMPS
MAXIMUM CASE DIMENSION (INCHES) 24L X 16W X 14.5T
MINIMUM CASE DIMENSION (INCHES) 8L X 6W X 4T

TOLERANCE UNLESS NOTED		PACKAGING DISTRIBUTORS, INC.	
DECIMAL X.XX = ±0.010 X.XXX = ±0.003	PROJECT CTA	SCALE NTS	DRAWN BY S.FIRMIN
FRACTIONAL X/X = ±1/32	TITLE CASE TAPER OVERALL ASSEMBLY	DESIGNER R. FALLAS	
ANGULAR ±0.5°	DATE 8/4/2016	DRAWING NUMBER CTA1003	SHEET NO. 1 of 1
REV C	REV DESCRIPTION EXTENDED UPSTREAM GUARD LENGTH	REV BY ECN	